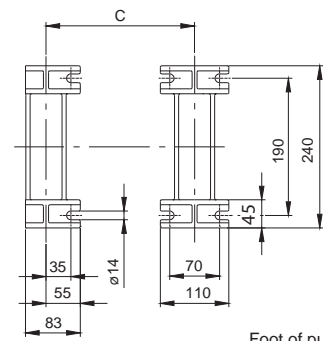
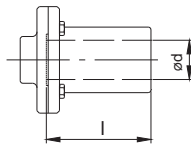
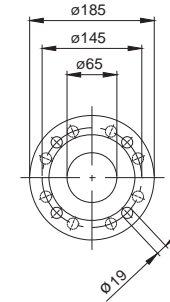


Coupling

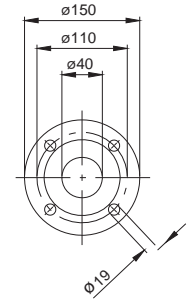


Foot of pump

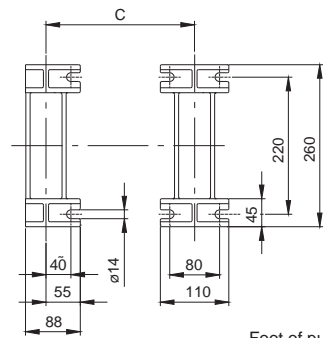
LBU 4 ...



Suction flange DN 65
PN 16, DIN EN 1092-2
PN 40, DIN EN 1092-2

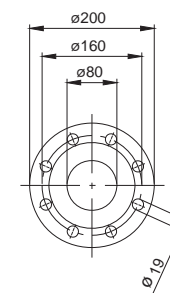


Outlet flange DN 40
PN 40, DIN EN 1092-2

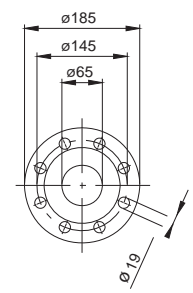


Foot of pump

LBU 6 ...



Suction flange DN 65
PN 16, DIN EN 1092-2
PN 40, DIN EN 1092-2



Outlet flange DN 40
PN 40, DIN EN 1092-2

LBU Pump Model	Motor Power Output kW	Motor Frame Size Motor Frame Size	Pump									Threephase Induction Motor			Motor Foot							Coupling		with Motor	without Motor		
			F _S	F _D	F _M	A	B	C	G	R	c1	≈L	≈L	a1	a	b	c	e*	f*	n	ø _s	w1	l	ød	Fig. A	Fig. L	
403 C120L	4	112M B14	--	5.1	--	8.6	4.6	--	5.9	8	.59	13.1	6.8	6.3										2.44	1.1	2.72	1.57
404 C120L	5.5	132S B5	--	6.3	--	9.9	5.6	--	5.9	8	.59	15.9	7.6	11.8										3.42	1.49	3.94	2.13
405 C120L	7.5	132S B5	6.29	6.3	--	11.3	5.6	8.7	5.9	8	.59	15.9	7.6	11.8										3.42	1.49	4.41	2.4
603 C160L	11	160M B35	--	--	6.3	10.4	6.7	--	7.1	9.6	.78	20.3	9.8	11.8	8.2	10	.86	10.2	12.6	2.7	.59	4.2	4.4	1.65	6.77	2.68	
603 D160L	15	160M B35	--	--	6.3	10.7	6.7	--	7.1	9.6	.78	20.3	9.8	11.8	8.2	10	.86	10.2	12.6	2.7	.59	4.2	4.4	1.65	7.08	2.68	
603 E162L	18.5	160L B35	--	--	6.3	10.9	6.7	--	7.1	9.6	.78	20.3	9.8	11.8	10	10	.86	11.9	12.6	2.7	.59	4.2	4.4	1.65	7.52	2.68	

Inches

LBU

High-Pressure
Multi-Stage Centrifugal Pump

Motor: 60Hz
Unit weight 103 kg [227 pounds]
Attention: actual motor dimensions possible may differ from the drawing.
Subject to alteration! ANSI Companion flanges available upon request

Shanley Pump
& Equipment, Inc.

