

* OT Configuration

PA

Submersible Screw Pumps

Shanley Pump
& Equipment, Inc.



PA

Features

The SEIM PA Series Submersible 3-Screw Pump is SEIM's best seller worldwide. These economical screw pumps are designed for submerged applications in the lube oil or hydraulic oil tank.

This is ideal for use in difficult locations where a normal pump will not fit. It's simple yet robust construction ensure years of operability with minimal complications.

Description

The SEIM PA Series Submersible Screw Pump operates at 62.5 to 224 GPM at pressures up to 725 PSI at a temperature range of 32° to 212 ° F.

SEIM PA Series 3-screw pump are ideal for:

Lubrication Systems
Filtration Systems
Recirculation Systems
Cooling Systems
Hydraulic Systems

SEIM screws pumps are volumetric self-priming pumps suited to handle oils and fluids with a minimum lubricating property. The pumps design makes them intrinsically reliable and efficient in their applications.



Shanley Pump & Equipment, Inc.
2525 S. Clearbrook Drive
Arlington Heights, IL 60005
P: 847.439.9200
F: 847.439.9388
www.shanleypump.com
sales@shanleypump.com

Usage

The functional characteristics of a Screw pump are:

- Very low noise levels
- Wide range viscosity compatibility
- High rotation rates = minimizing the size and cost of the pump
- No vibrations
- Minimum sensitivity to particle pollution
- High self-priming capacity
- Special design for systems with entrained air in the lubricant

For over 30 years SEIM has been supporting the pumping industry with their innovation and expertise in the pumping and handling of oils and viscous chemicals.

Main Applications

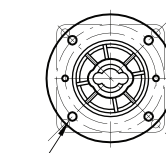
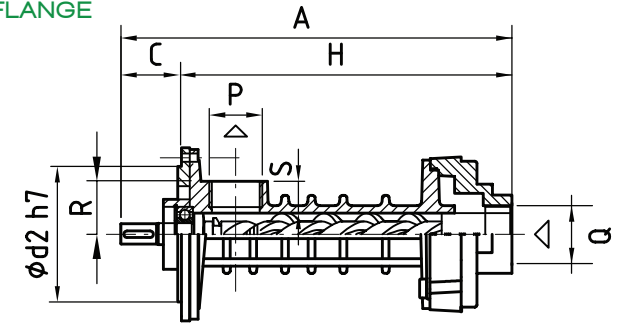
- Marine Pumping Systems
- Oils & Hydraulic Fluids Pumping
- High Viscosity Liquids Pumping
- Shipyards Construction Pumping
- Recirculation Systems Applications
- Lubrication Systems Applications
- Light Oil Recirculation Systems

GPM 62.5 - 224 GPM

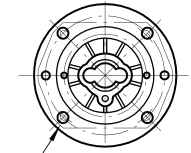
PSI up to 725 PSI

TEMP 32° F - +212° F

OT FLANGE

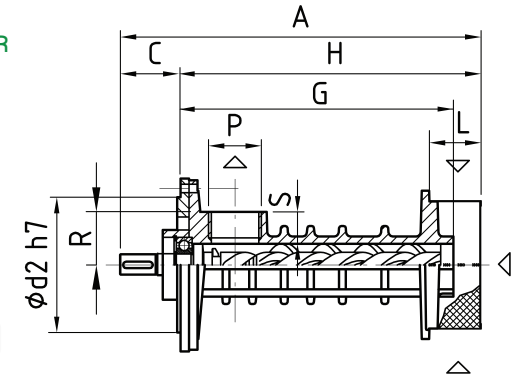


4 Holes DIA $\phi 14$
on d160



4 Holes DIA $\phi 18$
on d200

OM STRAINER



STEEL CAST

Dimensions Drawings

[Click here for complete dimensional drawings](#)



Performance Curve

For specific applications data on viscosity and pressure please contact us and we send you details about flow rates.



To download our screw pump fax form [click here](#)