

PXF

Vertical or Horizontal Mount Screw Pumps

Shanley Pump  
& Equipment, Inc.



# PXF

## Features

The SEIM PXF series of indoor/outdoor screw pumps is ideal for use in pressure pumping applications of viscous fluids in hydraulic and lubrication systems in both Marine and Industrial applications.

## Description

Its solid construction with a mechanical seal will provide years of steady service. Ideal for continuous duty up to 30 bar (435 PSI). The SEIM PXF Series operates at 5 to 55 GPM at a temperature range of 32° to 302° F

SEIM screws pumps are positive displacement volumetric self-priming pumps suited to handle various oils and fluids with a minimum lubricating property. The pumps design and manufacturing quality makes them intrinsically reliable for long service life and efficient in their applications.

For over 30 years SEIM has been supporting the pumping industry with their innovation and expertise in the pumping and handling of oils and other lubricating fluids. Contact a Shanley Pump and Equipment representative today at 847-439-9200.










**Shanley Pump & Equipment, Inc.**  
2525 S. Clearbrook Drive  
Arlington Heights, IL 60005  
P: 847.439.9200  
F: 847.439.9388  
www.shanleypump.com  
sales@shanleypump.com

## Usage

The SEIM PXF series Screw Pump is ideal for:

Separator Pumping  
Transfer Pumping  
Booster Pumping  
Feeder Supply Pumping  
Fuel Oil Supply Pumping  
Lubrication Systems

## Main Applications

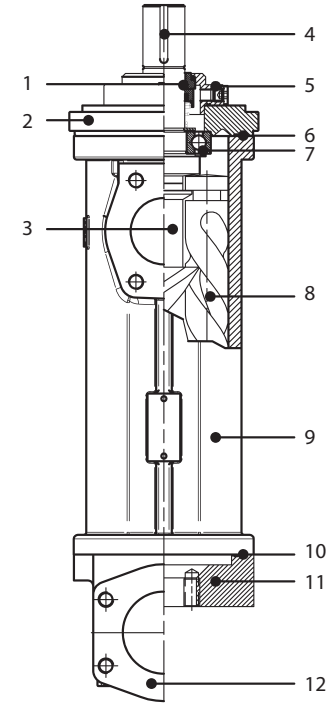
-  Marine Pumping
-  Oils Pumping
-  High Viscosity Fluids Pumping
-  Plant Engineering Pumping
-  Fuel Oil Pumping Applications
-  Viscous Fluids Pumping Applications
-  Lubrication Systems Applications

**GPM** 5 - 55 GPM

**PSI** 0 - 435 PSI

**TEMP** -13°F - +230°F

- 1.) Mechanical Seal or Radial Seal
- 2.) Cast Iron/Steel Motor Connection Flange
- 3.) Carbon Steel Driving Spindle
- 4.) Key
- 5.) Inspection Flange
- 6.) Gasket
- 7.) Ball Bearing
- 8.) Carbon Steel Idler Spindle
- 9.) Cast Iron Pump Casing
- 10.) Gasket
- 11.) Cast Iron Axial Inlet Flange
- 12.) Cast Iron Radial Inlet Flange



 **Dimensions Drawings**

[Click here for complete dimensional drawings](#)



### Performance Curve

For specific applications data on viscosity and pressure please contact us and we send you details about flow rates.



To download our screw pump fax form click here