

IANP

Progressive Cavity Metering Pump

Shanley Pump
& Equipment, Inc.



TANP

Features

Text

Description

Text



Shanley Pump & Equipment, Inc.
 2525 S. Clearbrook Drive
 Arlington Heights, IL 60005
P: 847.439.9200
F: 847.439.9388
 www.shanleypump.com
 sales@shanleypump.com

Usage

Text

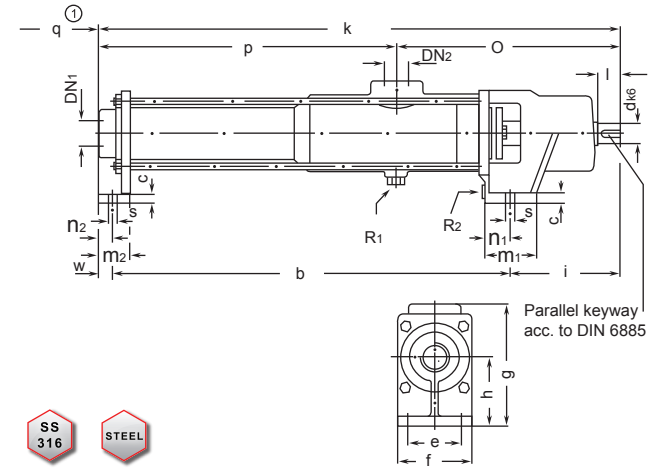
Main Applications

-  Wastewater Treatment Industry Water
-  Supply & Treatment Pumping
-  Chemical Industry Pumping
-  Fertilizer Industry Pumping
-  Polymer Injection Applications
-  Filtration System Applications
-  Wastewater Treatment Applications
-  Viscous Fluids Pumping Applications

GPM 0 - 9.5 GPM

PSI 0 - 175 PSI

TEMP 0°F - +300°F

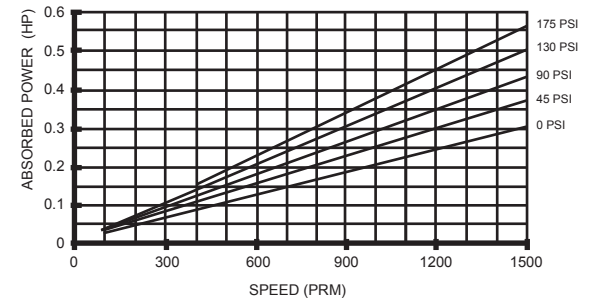
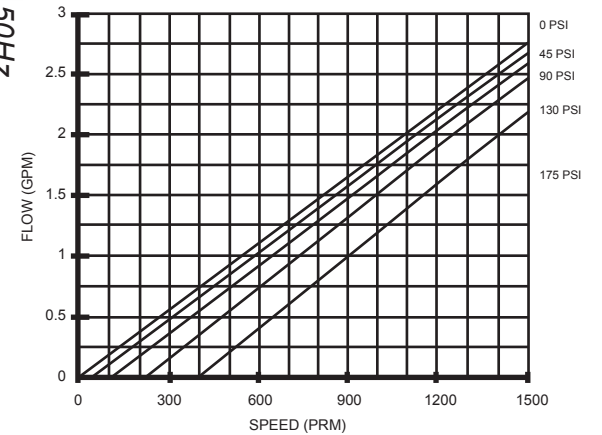


Dimensions
Drawings

[Click here for complete dimensional drawings](#)



50HZ
Performance Curve



[Click here for complete Flow Curves](#)