

OSNA

NVMH

High Pressure Centrifugal Circulation Pump

Shanley Pump
& Equipment, Inc.



NMH

Features

The OSNA NMH Pumps performance is up to 970 GPM (Gallons per Minute) at 3,500 RPM with fluids at temperatures up to 284°F at 580 PSI with 1,312 Ft. of Head as well as the OSNA NMH series of High Pressure Non Self-Priming Centrifugal Circulation Pumps are either furnished with gland packing or mechanical seals.

Description

The OSNA NMH Series of High Pressure Centrifugal Pumps are high-efficiency industrial pumps that are designed for low noise and high strength in addition to their superior pumping performance.

The OSNA NMH Series will also perform well as a boiler feed pump or in a boiler feed system. Maintenance is easy for the NMH series with its Modular construction. Exchangeable shaft sleeves are just one of the many features OSNA has thought of for ease of use.



Shanley Pump & Equipment, Inc.
 2525 S. Clearbrook Drive
 Arlington Heights, IL 60005
P: 847.439.9200
F: 847.439.9388
www.shanleypump.com
sales@shanleypump.com

Usage

The OSNA NMH (Horizontal) Series of High Pressure Centrifugal Pumps primary capabilities lie in the pumping of clear and slightly contaminated liquids. These Liquids include Fresh water such as well water, drinking water, boiler feed water for industrial use, process water for cooling, sea and brackish water, hot water, condensate retention and reclamation, lyes for chemical manufacturing processes and more.

The casing of the OSNA NMH Series is available depending upon your requests or chemical types in either cast iron or cast stainless steel for added strength.

Main Applications

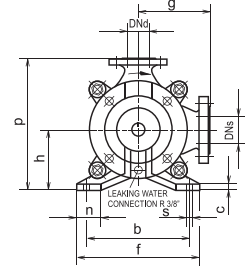
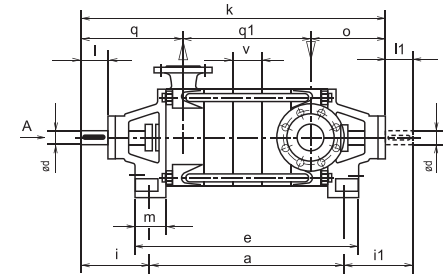
- Irrigation System Pumping
- Slightly Polluted Liquid Pumping
- Clear Liquids Pumping
- Plant Engineering Pumping
- Circulation Systems
- High-Pressure Applications
- Hot/Cold Water Pumping

GPM up to 970 GPM

PSI 580 PSI

TEMP +284 °F

HEAD 1,312 ft.



Dimensions Drawings



2900 RPM

50Hz
Performance Curve

