

speck
pumps 

TOE-GI

Centrifugal Heat Transfer Pump

**Shanley Pump
& Equipment, Inc.**



TOE-GI

Features

The Speck Pumps TOE-GI Series Centrifugal Heat Pumps are a vertical "inline" pump design for applications where space is an issue. The direct-coupled design of the TOE-GI eliminates the need to align the pump and motor shafts and eliminates any chance of shaft misalignment. The TOE Series is also available with a sealless design, magnetic coupling. Standard pumps are supplied with a mechanical seal design. Unit is direct-coupled to a flange-mounted motor.

Description

The close coupled design also eliminates any misalignment caused by temperature. The pump comes standard with a mechanical shaft seal design. Suction and Discharge mounting flanges for the GA Series are ANSI and the casing and impeller is made from spheroidal graphite nodular cast iron.

Speck Centrifugal heat transfer pumps are designed for the transport and re circulation of organic heat transfer oils on mineral and/or synthetic basis for heat transfer applications throughout the world. The design of Speck Thermal Transfer pumps allows for a pumping media that has little or no-abrasive contaminants and a pumping media that does not chemically attack the materials of construction of the Speck Pump.









Shanley Pump & Equipment, Inc.
 2525 S. Clearbrook Drive
 Arlington Heights, IL 60005
P: 847.439.9200
F: 847.439.9388
 www.shanleypump.com
 sales@shanleypump.com

Usage

Speck Centrifugal Thermal Transfer Pumps are available to work in a variety of industries where efficient heating is required for the manufacturing process. The Speck Pump provides the movement of heated thermal oil.

Boiler Applications, facilities with large baking and frying ovens, heated agitator and mixing tanks, flat glass production, solar power generation and the color and dye industry all have systems that would benefit from a Speck Thermal Centrifugal Pump.

Main Applications

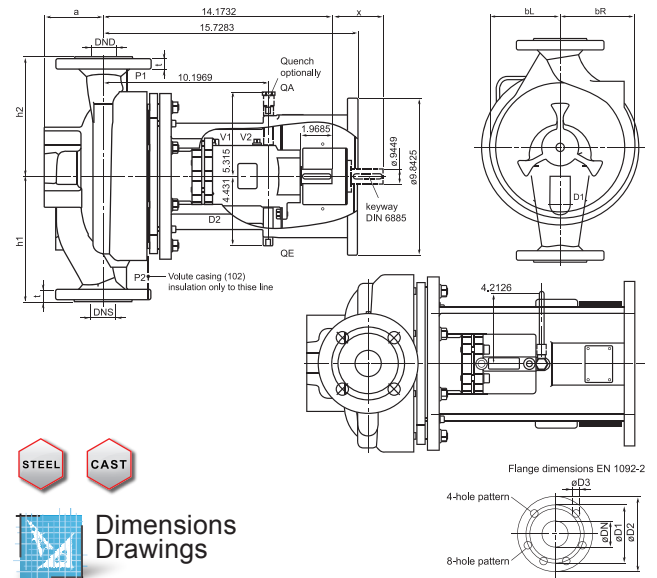
-  Baking Industry Pumps
-  Solar Industry Pumps
-  Plant Engineering Pumps
-  Paint/Dye Industry Pumps
-  Boiler Feed Pumping
-  Baking & Frying Pumps
-  Thermal Oil Pumping

GPM up to 880 GPM

PSI max. 232 PSI

TEMP hot oil up to 662°F

HEAD 328 ft.



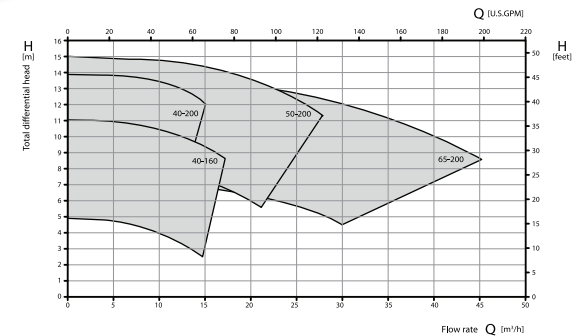
 **Dimensions Drawings**

Please Click The Icon Above For More Information:



50HZ
Performance Curve

1450 RPM



2900 RPM

